


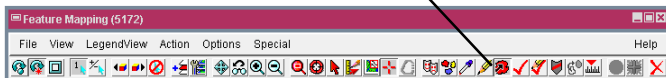
# Grow and Mark Features Tool

***DID YOU KNOW . . .*** you can use the Grow and Mark Features tool to interactively identify a range of cell values that represents a feature?

## What Using the Grow and Mark Features Tool Gives You

- Identify a map feature from a cell range you define
- Use mouse wheel to expand/reduce the determined cell range

Grow and Mark Features icon 



Region growing from initial mouse click



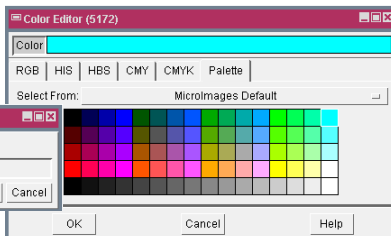
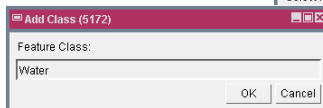
Region growing by expanding the range



Prototype feature



Right-click on the prototype feature to add a new class and specify a marking color.



Marked feature



## How to Use the Grow and Mark Features Tool

- Select *Image / Interpret / Feature Map* from the menubar.
- Select the raster object(s) to analyze and the reference object when prompted.
- Zoom in to the feature you want to identify.
- Click on the Grow and Mark Features icon.
- Click in an area that represents a feature.
- Roll the mouse wheel toward you to expand the range or away to reduce it.
- Right-click to convert the prototype feature to a marked feature.
- Select an existing Feature Class or enter a name for a new class when prompted.
- Select a color for the Feature Class when prompted.

***WANT TO KNOW MORE?***

See the Technical Guide entitled *Feature Mapping:*

# Region Growing Tool

